

Advanced Layer Training

Advanced Layer_Training.zip



Advanced Layer - Overview



Main Functions

- Edit annotation layers across the board
- Change the color of components in a drawing
- Merge and delete multiple/all layers



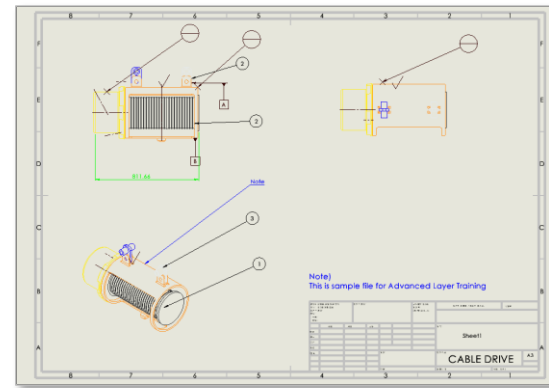
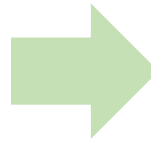
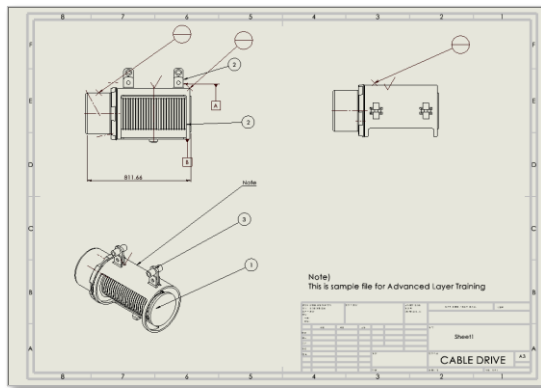
Benefits

- Easily manage a layer with respect to each annotation type
- Conveniently visualize various data used in a drawing
- Conveniently modify a layer created using SOLIDWORKS

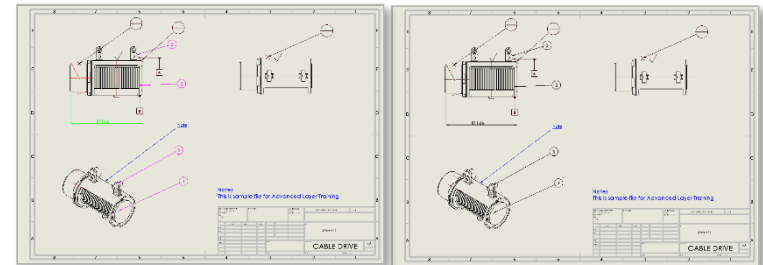
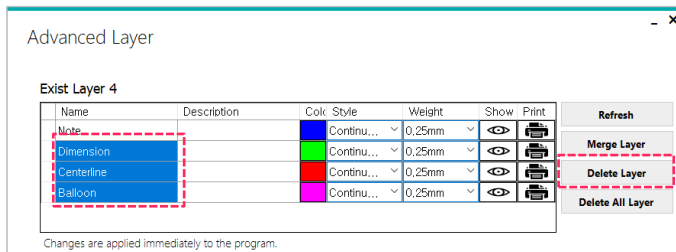


Course Objective: Follow instructions through the course and learn how to use Advanced Layer.

Colorize Drawing

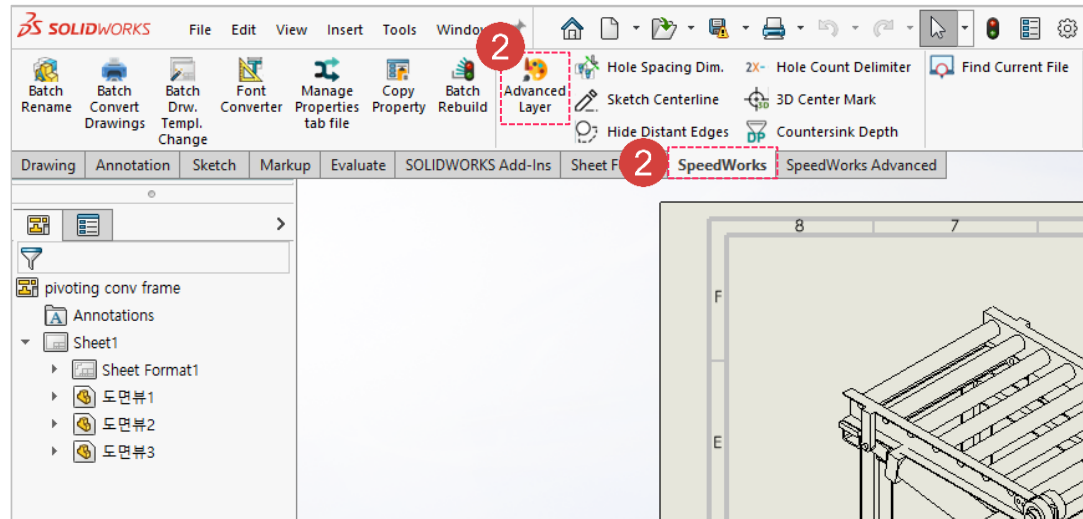
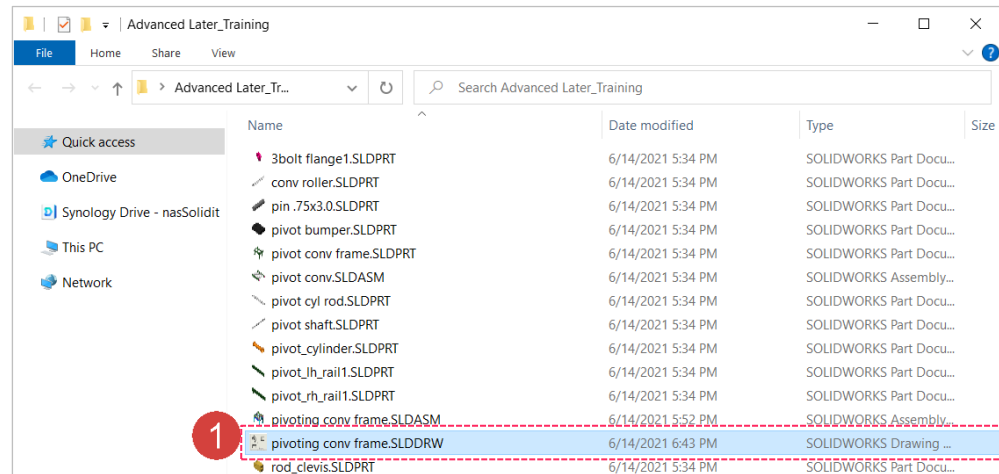


Multi Layer Delete



1 Double-click to execute **Pivoting conv frame.SLDDRW** file.

2 Click **[SpeedWorks]tab - [Advanced Layer]** button.



※ You can download example files at Support page in SpeedWorks Homepage(<https://speedworks.info>).

Advanced Layer - Create Layer

Work on the part with the red circle (1) following instructions by yourself.
The part with the black square (1) is an additional explanation or a reference.

1 Check 'Note' and 'Dimension' Layer in [Add Layer].

To change a color of a layer, click a color cell and select

2 colors. In this lecture, blue and light green are used for 'Note' and 'Dimension', respectively.

Double click the descriptions and write down words to

3 identify the item.

Check [Set Reference Model Color] - [Not use Model

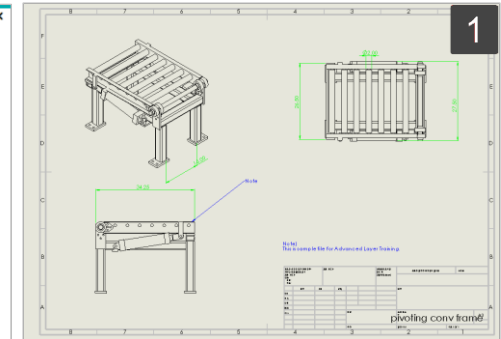
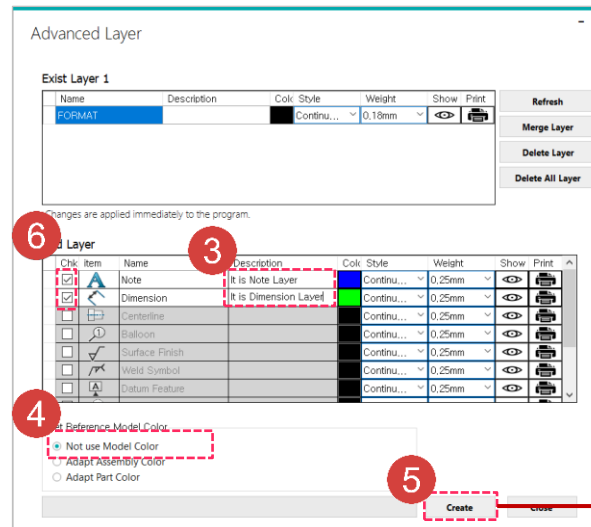
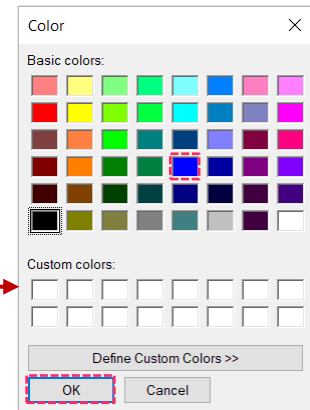
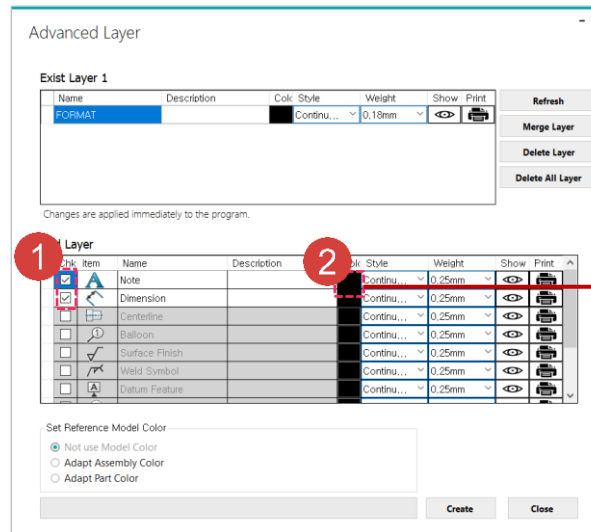
4 color].

Create layers by clicking [Create] button.

5 To prevent duplicate creation of the layer, uncheck

6 'Note' and 'Dimension' layer.

1 The colors of note and dimension in the layer have been changed.



Advanced Layer - Add Model Color Layer

Work on the part with the red circle (1) following instructions by yourself.
The part with the black square (1) is an additional explanation or a reference.

1 Check [Set Reference Model Color] - [Adapt Assembly Color] and click [Create] button.

2 (or) [Set Reference Model Color] - [Adapt Part Color] and click [Create] button.

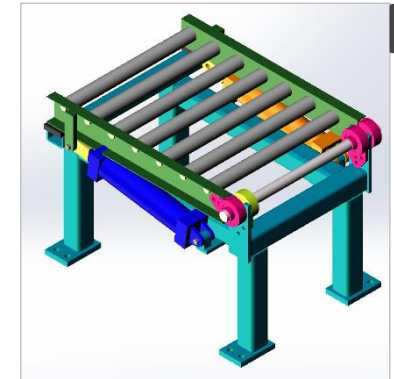
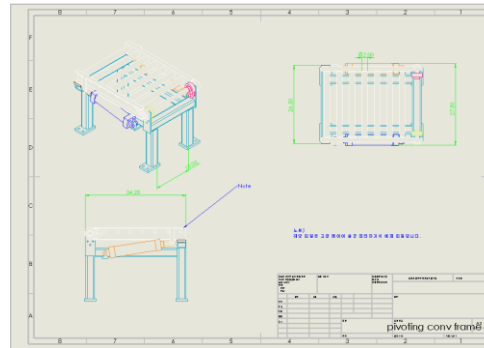
※In this lecture, we will proceed based on the first method (1).

Set Reference Model Color

- ☐ Not use Model Color
☒ Adapt Assembly Color
☐ Adapt Part Color

1

(Assembly Color)



1 The reference model in the drawing.

Part Color :

Assembly Color :

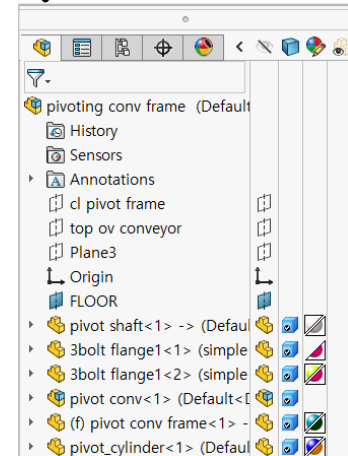
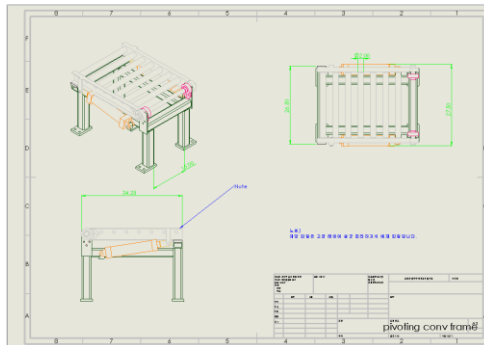
If users check 'Adapt Assembly Color', but there are no assembly color, then use the color of part.

Set Reference Model Color

- ☐ Not use Model Color
☐ Adapt Assembly Color
☒ Adapt Part Color

2

(Part Color)



Advanced Layer - Change Layer Option

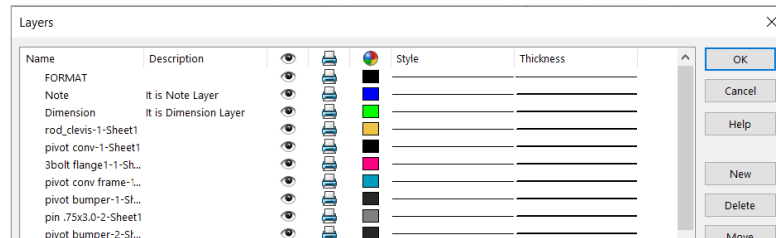
Work on the part with the red circle (1) following instructions by yourself.
The part with the black square (1) is an additional explanation or a reference.

1 Edit the name, description, color of the layer as below :

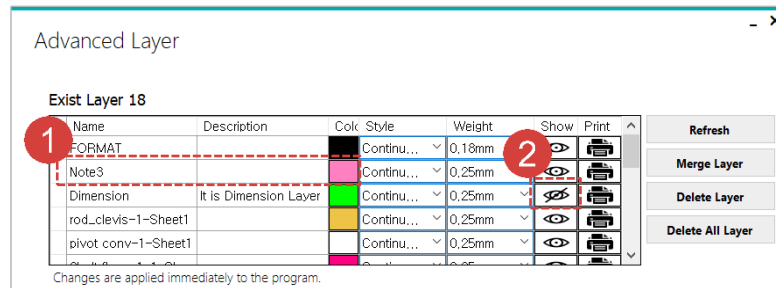
(Name: Note3, Desc: (Delete), Color: Pink)

Hide [Dimension] layer by clicking show/hide option.

2



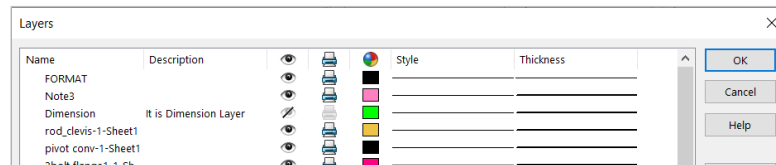
1



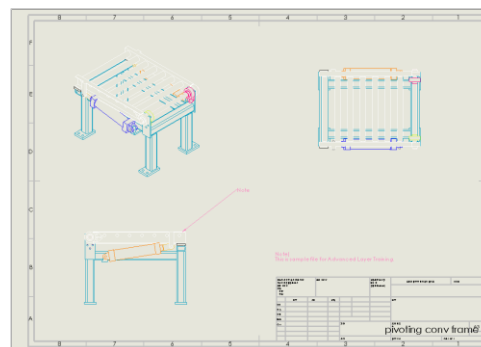
1 User can check the results in SOLIDWORKS layer manager.

2 This is SOLIDWORKS layer manger status after following step.

3 The modifications have been applied to drawing.



2



3

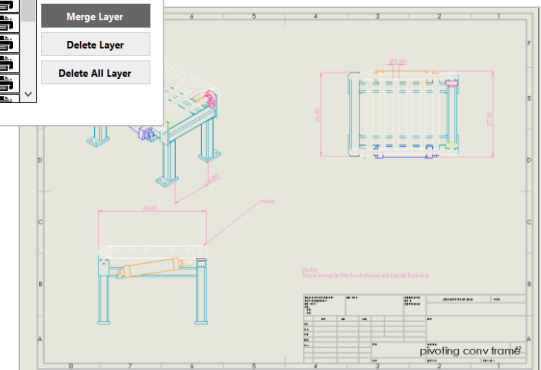
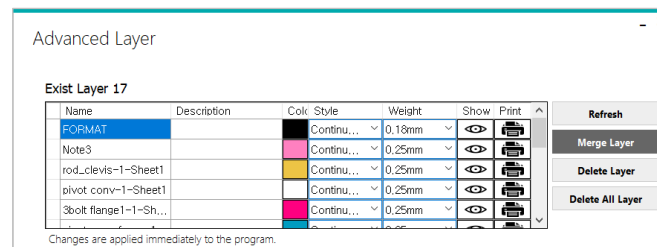
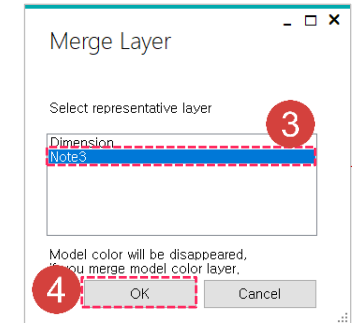
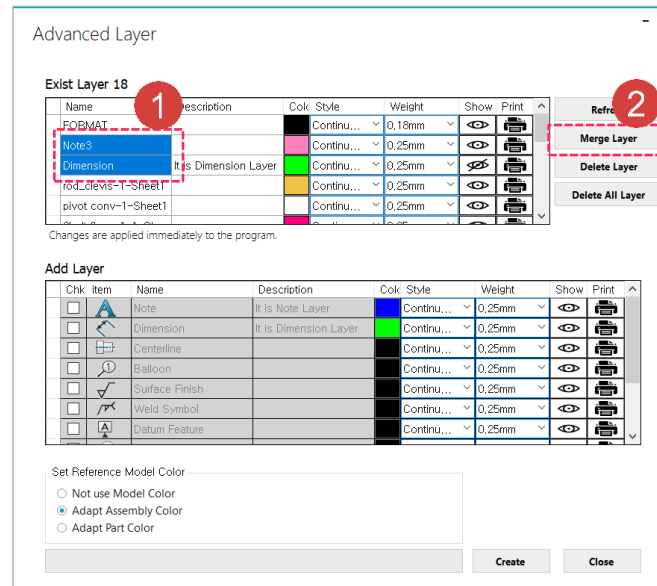
Advanced Layer - Merge Layer

Work on the part with the red circle (1) following instructions by yourself.
The part with the black square (1) is an additional explanation or a reference.

- 1 Select the layers to merge by **dragging**, [**Control + select**] or [**Shift + select**].
 - 2 With selected layers, click [**Merge Layer**] button.
 - 3 Select the representative layer to absorb other layers.
- Click [**OK**] button.

4

- 1 It is SOLIDWORKS layer manager and drawing status after merging.



Advanced Layer - Delete Layer

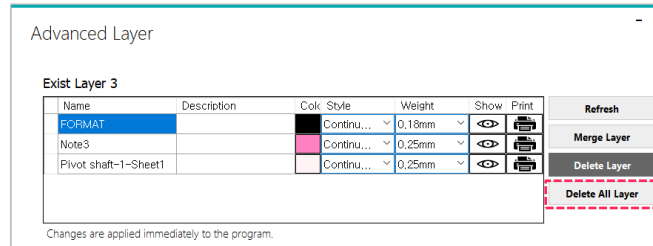
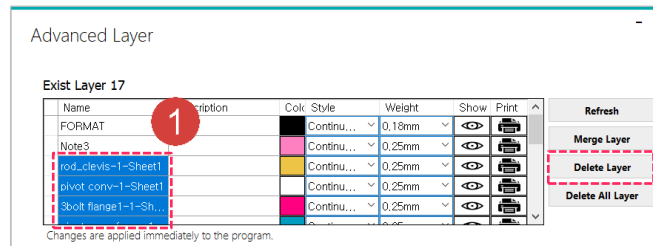
Work on the part with the red circle (1) following instructions by yourself.
The part with the black square (1) is an additional explanation or a reference.

1 Select layers to delete by drag, [Control + select] or [Shift + select]. Except **Pivot shaft-1-Sheet1** layer select all referenced model color layer.

2 Delete selected layers by click [Delete Layer] button.

Delete all layers by click [Delete All Layer] button.

3



1 Before delete layer.

2 It is result of 2p.

3 It is result of delete all layer.

